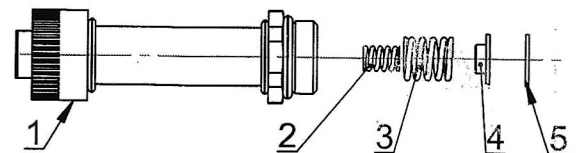
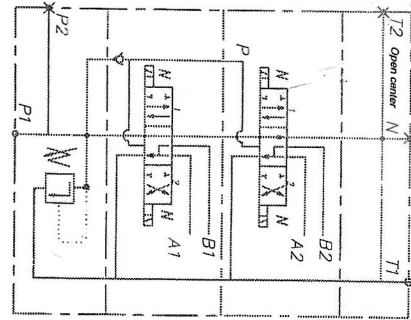


Parallel distribution



POS. #	PART #	DESCRIPTION	TUBE, ASSY/QTY.
1	GM4060/BD	Tube	1
2	542.02.04.15	SPRING	1
3	542.02.04.12	SPRING	1
4	558.02.04.03	Bushing	1
5	DIN472	Retaining Ring A14	1

Z50 DES3 12VDC S	220 875
02Z50 DD ES3 12VDC S	
03Z50 DDD ES3 12VDC S	220 879

SPECIFICATIONS	
NOMINAL FLOW RATE	13 gpm (50l/min)
OPERATING PRESSURE (MAX.)	3600 psi (250 bar)
PRESSURE AT PORTS A,B (MAX.)	4600 psi (315 bar)
BACK PRESSURE AT T (MAX.)	725 psi (50 bar)
RELIEF VALVE SETTINGS	435 psi to 3600 psi (30 bar to 250 bar)
PORTS P AND N	7/8-14UNF (SAE10)
PORTS A AND B	3/4-16UNF (SAE8)
PORT T	7/8-14UNF (SAE10)
SHIPPING WEIGHT	9.2lbm (4kg)

POS. #	PART #	DESCRIPTION	02Z50 DD ES3 S /QTY.
1	543.00.01-04	VALVE BODY	1
2	DIN913	SCREW M4x6	2
3	542.02.01.00-01	SPOOL DES, ASSY	2
4	542.02.03.00	TRANSITION	4
5	79.62.00-01	PLUG 7/8-14UNF (SAE10)	3
6	542.02.04.00	TUBE, ASSY	4
7	-	STEEL BALL 12	1
8	79.04.00	MAIN RELIEF VALVE	1
9	79.00.03	SPRING	1
10	-	PLATE	1
11	DIN660	RIVET	2
12	542.02.00.11...	COIL	4
13	DIN43650	CONNECTOR Pg11	4